

GMT



Istruzioni per l'uso
Notice d'utilisation
Directions for use
Bedienungsanleitung
Instrucciones de uso
Instruções de uso
Gebruiksaanwijzing
Brukerveiledning
Käyttöohjeet
Brugsanvisning
Bruksanvisningba
Instrukcja obsługi
Kullanım kılavuzu
Руководство по эксплуатации

Hướng dẫn cách sử dụng
Οδηγίες λειτουργίας
Navodilo za uporabo
Návod na obsluhu
Instruțiuni de folosire
Указание за използване
Kzelési útmutató
Návod na obsluhu
Uputstvo za upotrebu
Uputa za uporabu
Kasutusjuhend
Lietošanas pamācība
Vartojimo instrukcija
Упатства за употреба

 **GRAZIADIO & C.**^{S.P.A.}
ELETTROCONDOTTI
prefabbricati

Via Pellice 75 – 10098 – Rivoli (TO) – Tel. +39.011.9591991 – Fax +39.011.9574273
Web site : www.graziadio.it – E-mail: info@graziadio.it

Attention: the photos are purely indicative
1-JOINT ASSEMBLY

1. For the assembly of the GMT bus-duct it is necessary to use these tools:

- n. 1 - 17 mm wrench
- n. 1 - Torque wrench with a 17 mm insert
- n. 1 - 10 mm wrench

Components for the junction of each conductor
 (for IP66 use only red sheath)

BAR JOINT KIT up to 12 kV – IP42



BAR JOINT KIT up to 12 kV – IP66



Lateral structure and metallic lid with n. 8 M6 screws



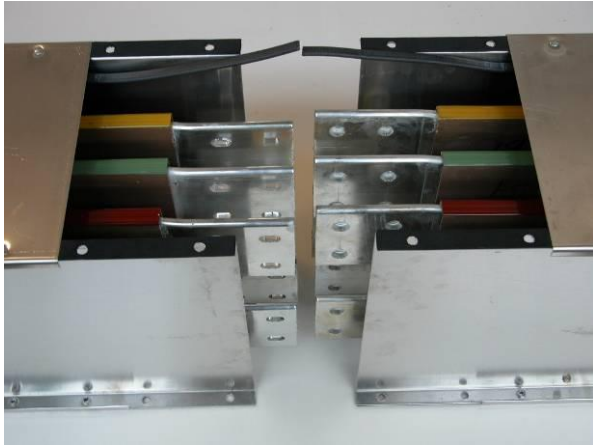
SIDE EARTH
 CONTINUITY JOINT
 (N. 2 EACH JOINT)
 BAR JOINT KIT



DUCT LID
 (N. 2 EACH JOINT)

2. Take two elements and put them together

Note: The colours on the phases are used only for this instruction to simplify the view but you won't find any colour on the real elements.



3. Bring near the two elements to join and insert the screws without tightening them;



4. Tighten the bottom screws of the first bar with the torque wrench (Torque between 50 and 55 Nm);



5. Insert the top screws and tighten them with the torque wrench (Torque between 50 and 55 Nm);



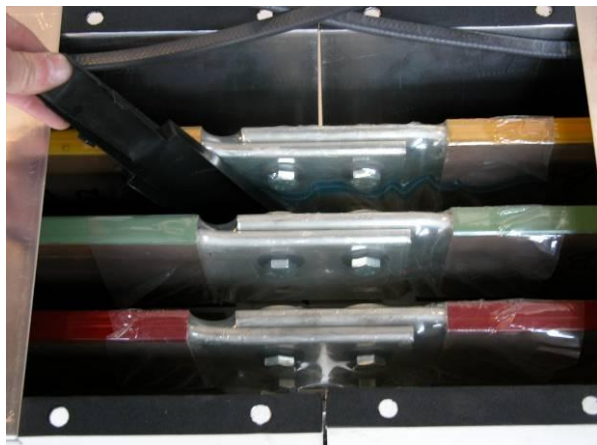
6. Repeat the item for all bars;

7. Take the plastic joint cover. It comes in two parts: body and lid. (not for IP66)

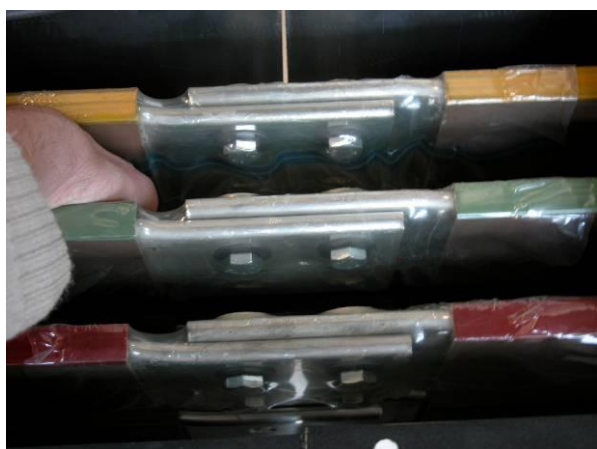


8. Take the lid and insert it under the bar in the middle first; (not for IP66)





9. Put the plastic lid under the bar; (not for IP66)



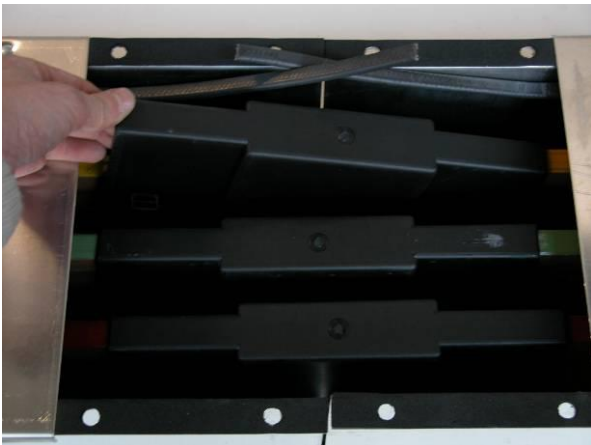
10. Take now the plastic body and insert it on the bar in the middle, and with two hands close the four hooks of the plastic lid; (not for IP66)



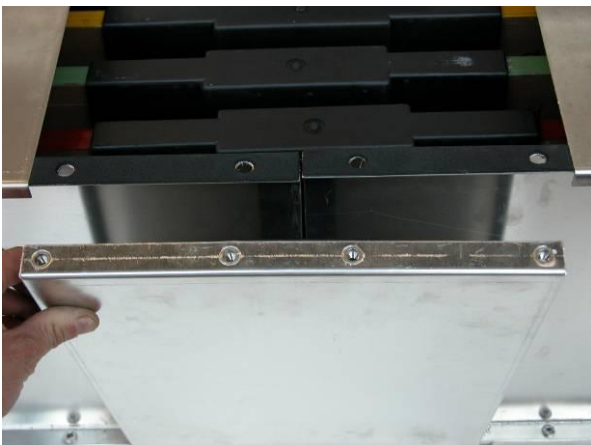
11. Take another cover joint (first the lid under the bar and then the body) and place it in the same manner of the previous one (not for IP66).



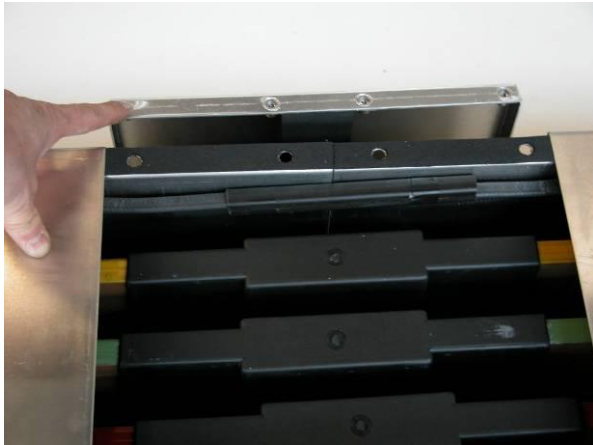
12. Take the third cover joint (first the lid under the bar and then the body) and place it in the same manner of the previous one. Repeat the operation for the other conductors; (not for IP66).



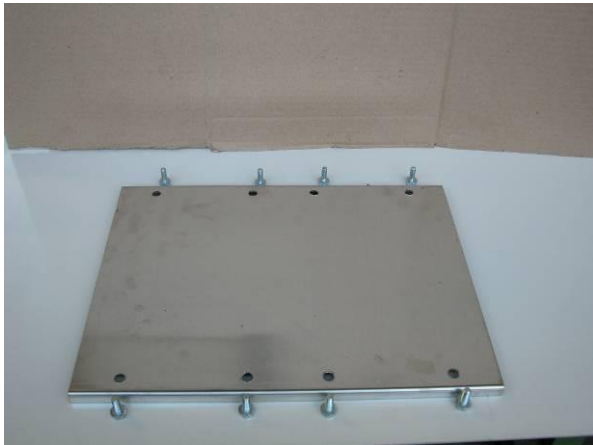
13. Take the first side earth continuity joint and put it near the bus duct checking that the 8 holes in the bus duct are matching with the 8 threaded inserts;



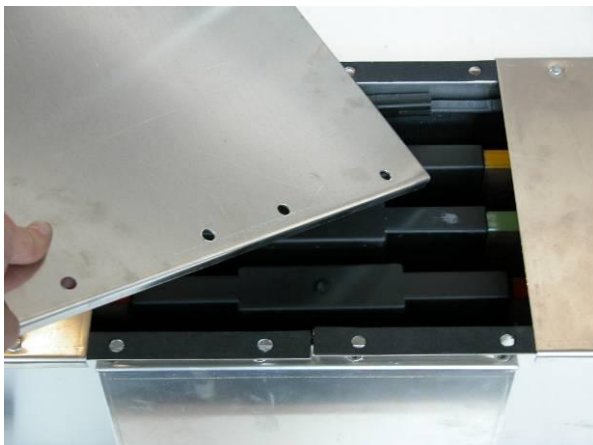
14. Take the second side earth continuity joint and put it near the bus duct checking that the 8 holes in the bus duct are matching with the 8 threaded inserts;



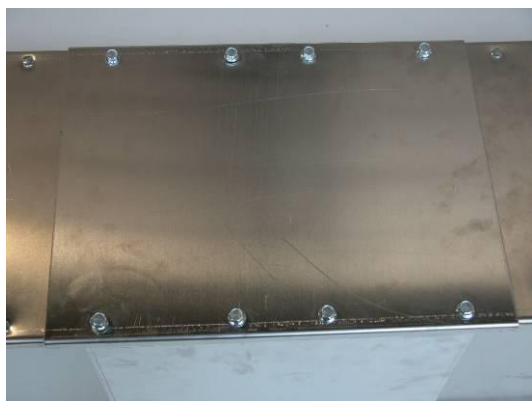
15. Take the duct lid with n. 8 M6 screws



16. Put it on the bus duct and fasten the n. 8 screws;



17. Repeat the same on the second lid and the joint is complete.



22. Make the same for all the other joints.

23. MOVEMENT**YES !**

With the forklift truck.

**NO !**

Do not lift from conductors!

MANUTENZIONE E ACCESSORI DI RICAMBIO PER GMT
MANUTENTION ET ACCESSOIRES DE RECHANGE GMT
MAINTENANCE AND SPARE PARTS FOR GMT SYSTEMS

Il sistema GMT, correttamente montato ed in normali condizioni d'impiego, non necessita di manutenzione né di accessori di ricambio per un periodo di esercizio minimo di 3 anni.

Le système GMT, correctement monté et dans des conditions d'utilisation normales, n'a pas besoin de manutention ou d'accessoires de rechange pour une période minimale de 3 ans.

The GMT busbar system, properly assembled and in normal use conditions, doesn't need neither maintenance nor spare parts for a minimum of 3 years.

PER ULTERIORI INFORMAZIONI: tel +39.011.9591991 e-mail: info@graziadio.it
POUR SUPPLEMENT D'INFORMATIONS: tel +39.011.9591991 e-mail: info@graziadio.it
FOR FURTHER INFORMATION: tel +39.011.9591991 e-mail: info@graziadio.it